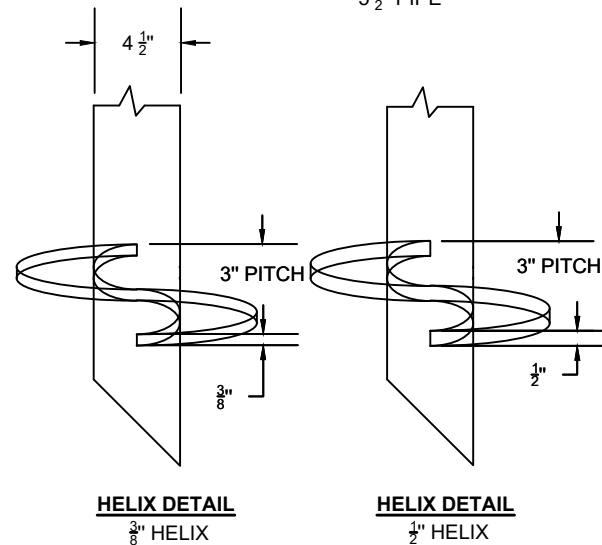
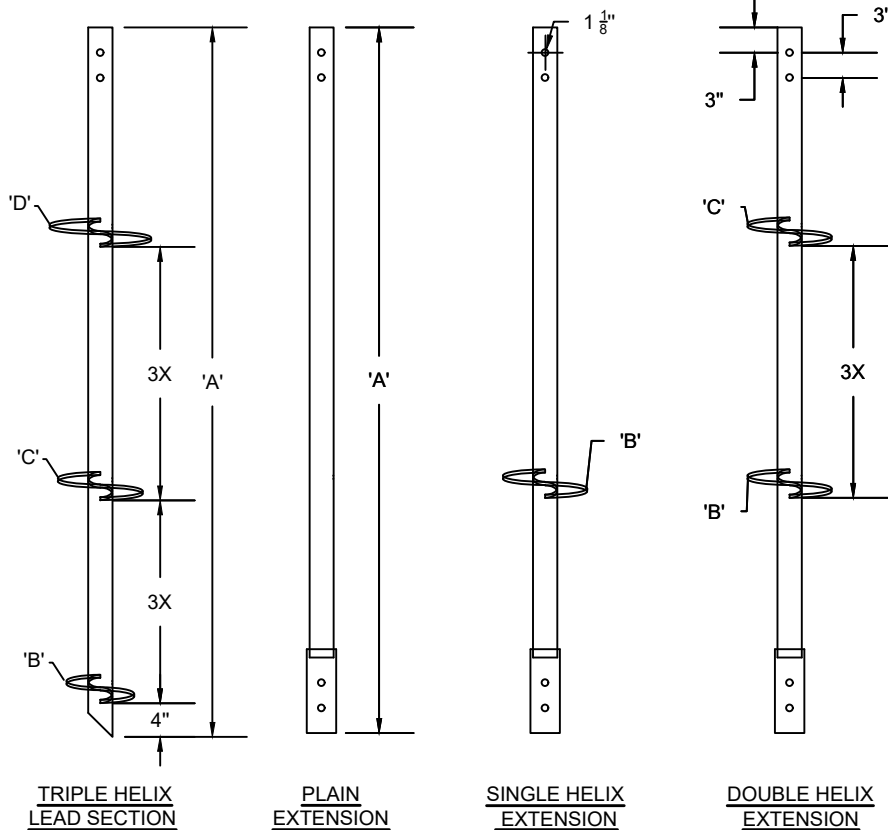
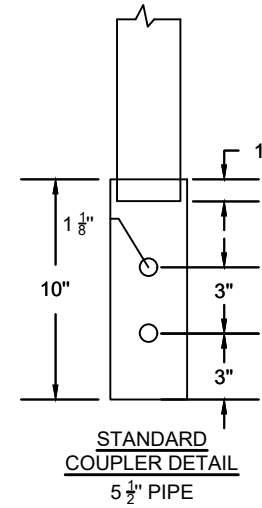


**LEAD SECTIONS - PARTS LIST**

PART NUMBER	DIM 'A'	DIM 'B'	DIM 'C'	DIM 'D'
E458481012HWL	84"	8"	10"	12"
E4584101214HWL	84"	10"	12"	14"
E4584121416HWL	84"	12"	14"	16"
E45120101214HWL	120"	10"	12"	14"
E45120121416HWL	120"	12"	14"	16"
E45180101214HWL	180"	12"	14"	16"
E4584HWE	60"			
E4584HWE	84"			
E45120HWE	120"			
E45180HWE	180"			
E456012HWE	60"	12"		
E456014HWE	60"	14"		
E45841414HWE	84"	14"	14"	

**GENERAL NOTES**

1. SHAFT MATERIAL - 4 1/2" OD ASTM A500 GRADE C  
Fy= 50 KSI, Ft= 62 KSI.
2. FINISH HOT DIPPED GALV. PER ASTM A 123/153.
3. ALL WELDING TO BE PERFORMED BY QUALIFIED WELDER TO AWS D1.1.
4. TORQUE STRENGTH RATING OF 30,000 FT-LBS.
5. ULTIMATE CAPACITY OF UNIT IS 180 KIPS.
6. HELIX SPACING SHALL BE 3X TIMES THE DIAMETER FROM THE LOWEST HELIX ACCORDANCE WITH ICC-ES AC358.
7. STEEL HELIX MATERIAL TO CONFORM TO ASTM A572, 50 KSI.
8. COUPLING BOLTS: 6 1/2"x1" ASE J429 GRADE 8.
9. ALL MATERIAL IS MANUFACTURED IN U.S.A.



PROPRIETARY AND CONFIDENTIAL  
THE INFORMATION CONTAINED IN THE DRAWING IS THE SOLE PROPERTY OF EMPIRE PIERS. ANY REPRODUCTION IN PART OR AS A WHOLE WITHOUT THE WRITTEN PERMISSION OF EMPIRE PIERS IS PROHIBITED.



DRAWN	DATE
Luke Brown	11/18/2022
CHECKED	DATE
APPROVED	DATE
MFG	DATE
Empire Piers	11/18/2022
SCALE	SHEET
NTS	1 of 1

EMPIRE PIERS 2656 EAST HWY 47 WINFIELD, MO 63389 (636) 668-8066
TITLE 4 1/2" OD x .337" WALL TRIPLE LEADS & EXTENSIONS
PART NUMBER E45XXXXXHWX-01