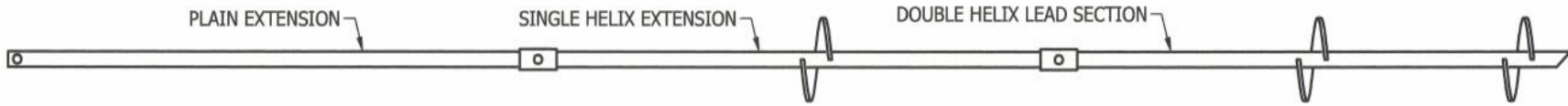
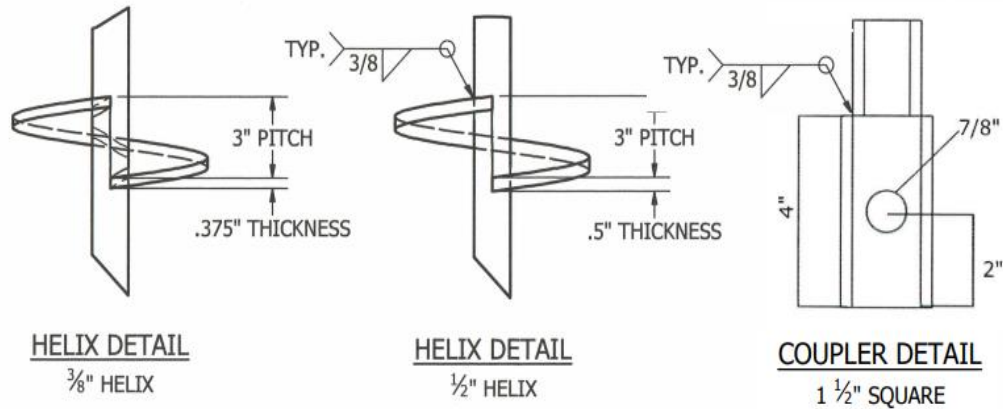
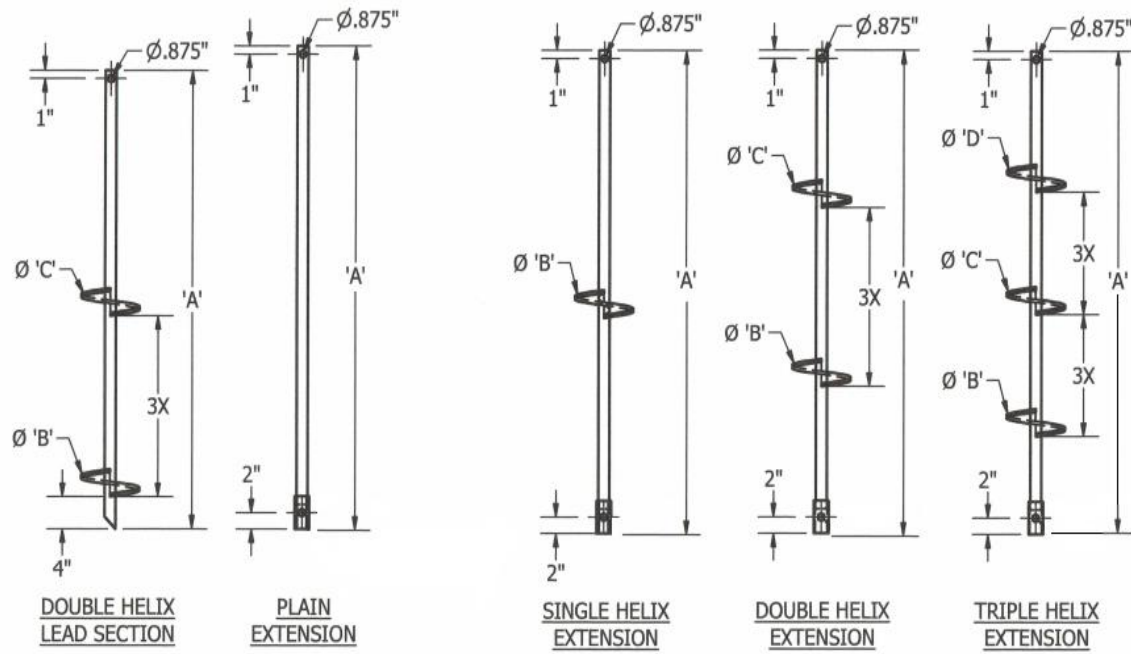


LEAD SECTIONS - PARTS LIST

| PART NUMBER | DIM 'A' | DIM 'B' | DIM 'C' | DIM 'D' |
|-------------|---------|---------|---------|---------|
| E1560810L   | 60"     | 8"      | 10"     |         |
| E15601012L  | 60"     | 10"     | 12"     |         |
| E1584810L   | 84"     | 8"      | 10"     |         |
| E15841012L  | 84"     | 10"     | 12"     |         |
| E15841414L  | 84"     | 14"     | 14"     |         |
| E1560E      | 60"     |         |         |         |
| E1584E      | 84"     |         |         |         |
| E15120E     | 120"    |         |         |         |
| E15608E     | 60"     | 8"      |         |         |
| E156088E    | 60"     | 8"      | 8"      |         |
| E1560888E   | 60"     | 8"      | 8"      | 8"      |
| E158414E    | 84"     | 14"     |         |         |



TYPICAL PIER ASSEMBLY



GENERAL NOTES

1. SHAFT MATERIAL - ROUND CORNERED SQUARE (RCS) STEEL BAR PER ASTM A29 GRADE 1045 WITH MILL CERT. AT 70 KSI
2. FINISH HOT DIPPED GALV. PER ASTM A 123/153.
3. ALL WELDING TO BE PERFORM BY QUALIFIED WELDER TO AWS D1.1
4. TORQUE STRENGTH RATING OF 5,500 FT-LBS
5. ULTIMATE CAPACITY OF UNIT IS 55 KIPS (KT) = 10
6. ULTIMATE TENSILE STRENGTH = 60 KIPS
7. STEEL HELIX MATERIAL TO CONFORM TO ASTM A572, 50 KSI. HELIX GEOMETRY IN ACCORDANCE WITH ICC-ES AC308.
8. COUPLING BOLTS: 3 1/2" x 3/4" A5E J429 GRADE 5 BOLT SHEAR = 85 KSI, YIELD STRENGTH = 92 KSI, TENSILE STRENGTH = 120 KSI
9. ALL MATERIAL IS MANUFACTURED IN U.S.

PROPRIETARY AND CONFIDENTIAL  
THE INFORMATION CONTAINED IN THE DRAWING IS THE SOLE PROPERTY OF EMPIRE PIERS. ANY REPRODUCTION IN PART OR AS A WHOLE WITHOUT THE WRITTEN PERMISSION OF EMPIRE PIERS IS PROHIBITED.



|                       |               |  |                  |                 |
|-----------------------|---------------|--|------------------|-----------------|
| DRAWN<br>John Stanek  | 4/30/2016     | EMPIRE PIERS<br>2656 EAST HIGHWAY 47<br>WINFIELD, MO 63389<br>(636) 668-8066 |                  |                 |
| CHECKED<br>Luke Brown | 4/30/2016     |  |                  |                 |
| APPROVED<br>Greg Pyle | 4/30/2016     | TITLE<br>1 1/2" SQUARE<br>LEADS & EXTENSIONS                                 |                  |                 |
| MFG<br>Empire Piers   | 4/30/2016     |  |                  |                 |
| SCALE<br>NTS          | DWG SIZE<br>B | REV  | DWG NO<br>E15X02 | SHEET<br>1 of 1 |